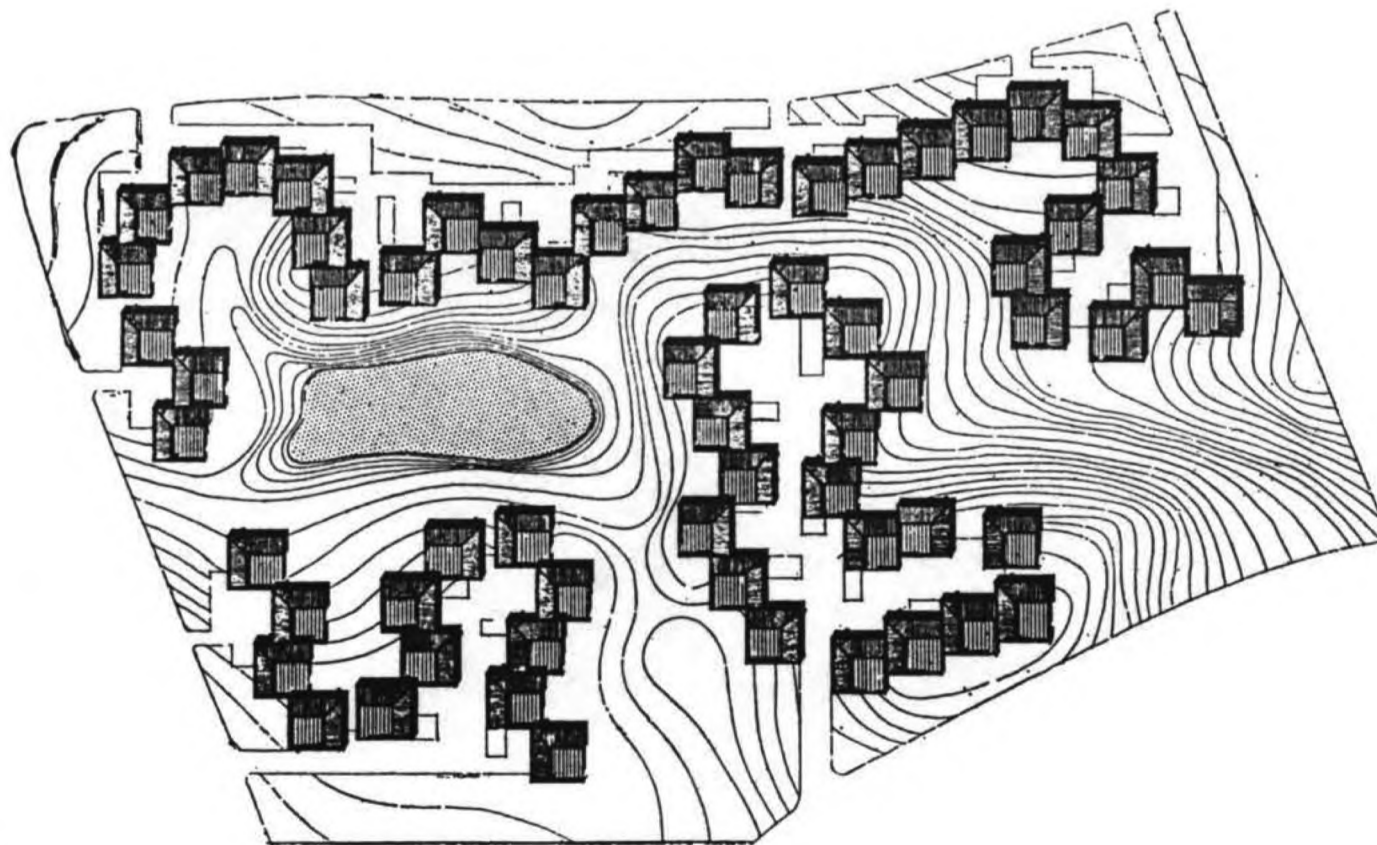


Abstracted from "Architectural Design"
Volume XXX, Number 9, September 1960
Pages 247-248.

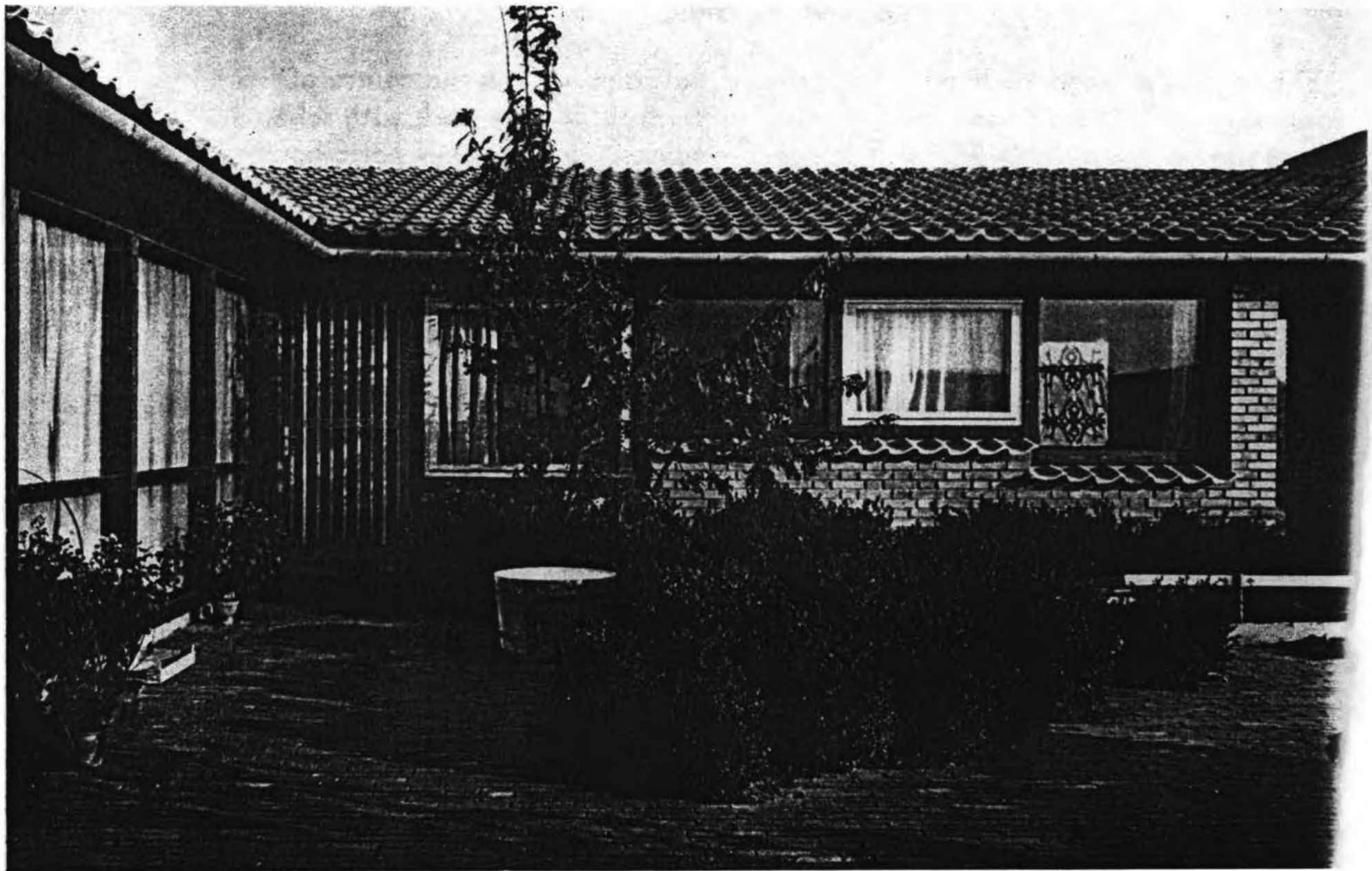
COURT HOUSES AT ELSINORE, DENMARK

Jørn Utzon

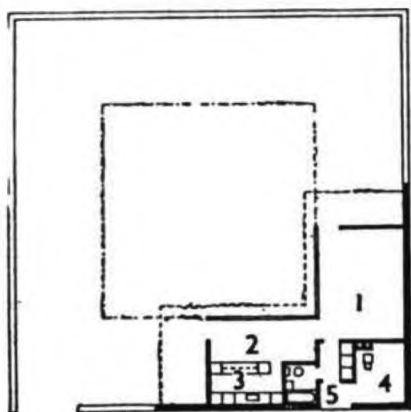
1. The court house is a square unit where the dwelling occupies two adjacent sides of the square, whilst the two other sides are screened by walls. The screen walls are so designed that there are pleasant views to the surrounding parkland from the individual courtyard gardens. The court house unit offers excellent possibilities as a building element. A chain of such houses can be flexibly adapted to undulating ground, and can absorb both vertical and horizontal stagger. As the building sites proper are small, it is economically possible to provide large areas of common parkland. Owing to this, the court house can be used for the creation of typical neighbourhood units, precincts, market squares, open spaces and enclosed courts. On this site 60 court houses were erected. If conventional one-family bungalows had been erected on the same area there would only have been space for 48. The same material, yellow brick, has been used throughout. The variety of plans allows for almost any size dwelling, and a few shops have been included.



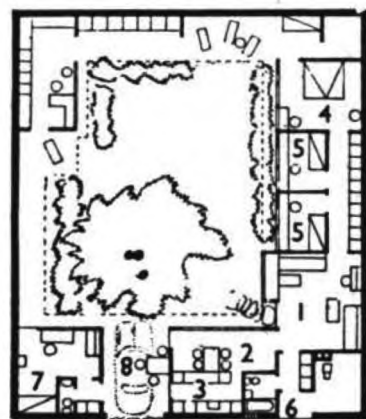
Above: site layout. The houses are served from a perimeter road with cul-de-sac access. The close packing of the units allows for a great deal of common parkland, including a small lake



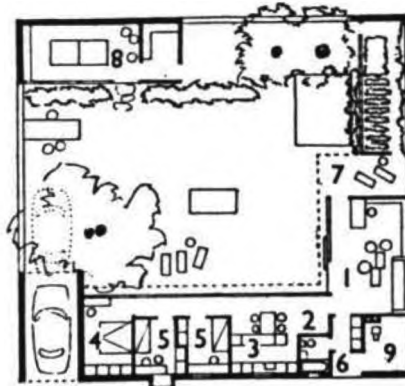
Above and below: the courtyard of a typical house



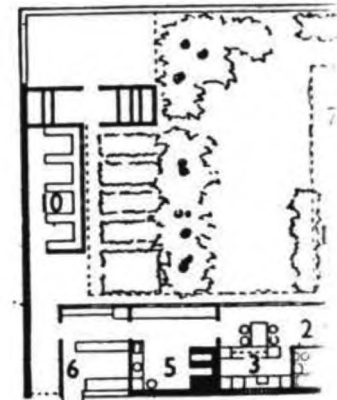
Above: minimum unit plan. Key:
1 living 2 dining 3 kitchen
4 cycle store and boiler room
5 entrance



Above: three bedrooms with
separate flat. Key: 1 living
2 dining 3 kitchen 4 main bed-
room 5 children's bedroom
6 entrance 7 guest quarters or
rooms to let 8 outdoor dining or
carport



Above: three bedrooms with games
room. Key: 1 living 2 dining
3 kitchen 4 main bedroom 5 chil-
dren's bedroom 6 entrance 7 out-
door terrace 8 games room and
store 9 cycle store and boiler room



Above: house with baker's
Key: 1 living 2 dining 3 k
4 main bedroom 5 bakery
7 outdoor terrace 8 cycle s
and central heating 9 entr
10 store